

**AHDB Pork Model Template 3.5 3C APPENDIX
Accident Management Plan**

Accident Risk is also considered as part of Environmental Risk Assessment B3.5 6a

Farm name: Illustrative Farm **Operator:** Mr P Fffff **Permit number:** 1234

SITE LOCATION DETAILS – ILLUSTRATIVE FARM	
Unit phone no:	01### #######
Mobile contact:	07## #######
Grid reference of unit:	EG9790 2349
Grid reference of access:	EG978 234

EMERGENCY CONTACT DETAILS		
Emergency services:	999	
Local police:	01xxx xxxxxx	
Doctor:	01yyy yyyyyy	
Environment Agency hotline:	0800 80 70 60 (24 hour emergency hotline)	
Local office:	01### #######	
	Office hours	Out of hours
Electricity supplier:		
Gas supplier:		
Local authority:		
Maintenance contractor:		
Oil supplier:		
Sewage undertaker:		
Veterinary surgeon:		
Spreading contractor:		
Water undertaker:		
Waste disposal contractor:		
Electrician:		
Plumber:		
COMPANY CONTACTS (Out of hours)		
Operator:	Mr P Fffff 01### #######	
Unit manager:	Mrs M Oooo 07### #######	
Head office contact:	Mr P Fffff – as above	

	Date	Signature
Date of Plan:	30 March 2007	
Date of subsequent review:		

Accident Management Plan

This accident management plan contains the:

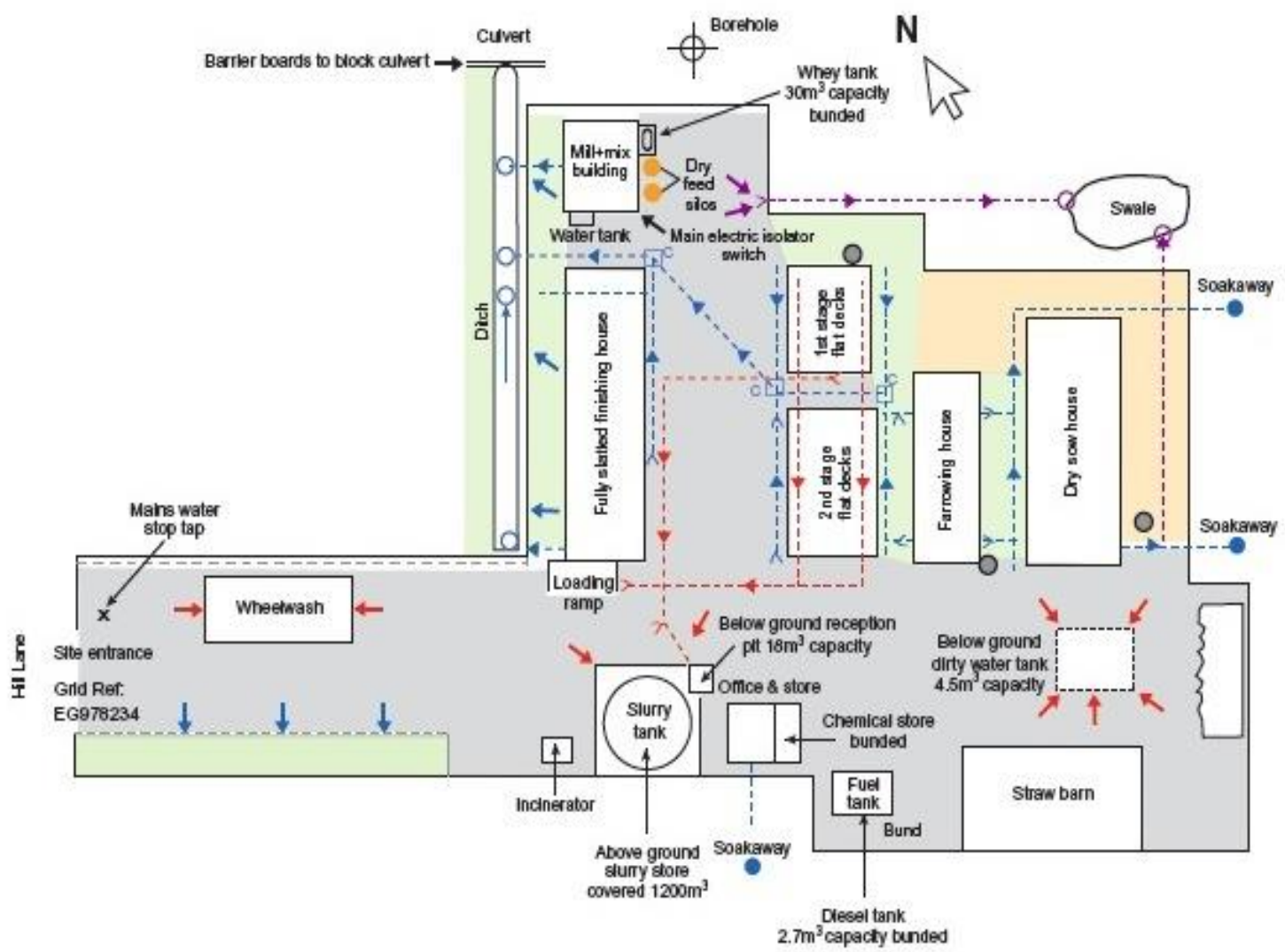
- Accident management site plan
- Inventory of tanks and stores
- Inventory of raw materials
- Emergency procedures:
 - Immediate actions
 - Secondary actions – depending on type of accident.

Accident Management Site Plan

The Accident Management Site Plan includes information of relevance for dealing with accidents that may pose a risk of environmental pollution and pin points the location of key equipment. This includes:

- Site drainage details
- Mains water stop tap
- Fire hydrant
- Main electrical supply isolator
- Gas supply isolator(s)
- Diverter valves
- Inspection points for detecting pollution
- Location of fire extinguishers
- Ponds, tanks, etc. containing water for fire fighting
- Storage areas, eg chemicals, fuel, bedding
- Drain inlets vulnerable to contamination
- Spill kits or emergency materials eg sand bags
- Vulnerable locations, such as feed silos
- Damming points, eg culverts, boom anchor points, etc
- Potentially sensitive areas of porous or unmade ground
- Soakaways.

AHDB Pork Template B3.5 5a – Site drainage plan



- Legend**
- Permeable ground
 - Impermeable ground
 - Semi-permeable ground
 - Clean water drain
 - Lightly contaminated water drain
 - Dirty water or slurry channel
 - Man hole or inspection cover
 - Drain inlet
 - Drain outfall
- Direction of surface flow**
- Clean water
 - Lightly contaminated water
 - Dirty water
 - Soakaway

IPPC Intensive Agriculture
Illustrative Farm – Pigs
Site Drainage

Applicant names:

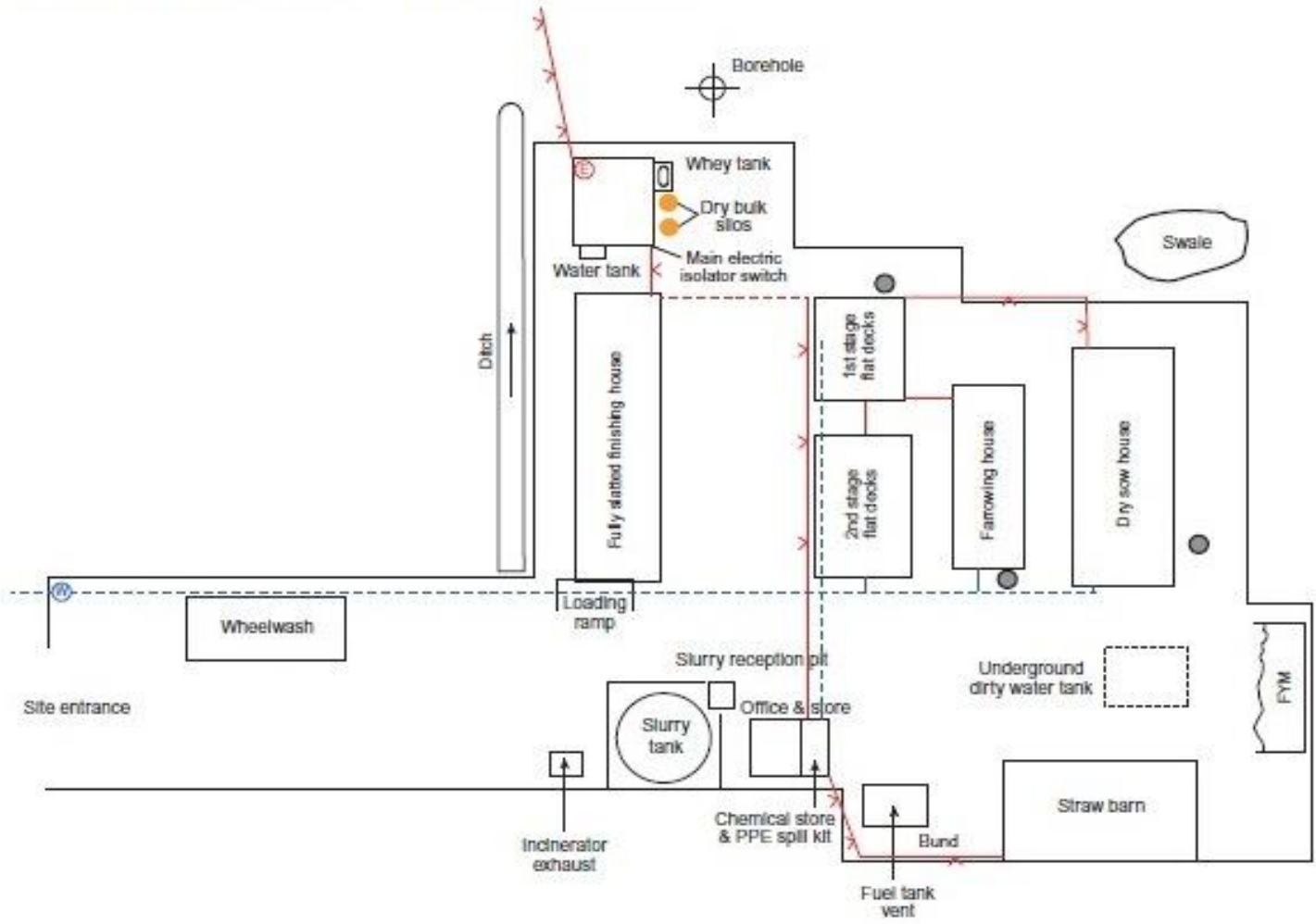
Site address:

Date:

Scale:

Prepared by:

AHDB Pork Template B3.5 5a – Site Services Plan



Legend

- Feed bins
- X— Overhead power line
- ⓔ Electricity meter
- Underground power line
- Ⓜ Water meter
- Underground water supply

IPPC Intensive Agriculture
Illustrative Farm – Pigs
Site Plan A
Services Plan

Applicant names:

Site address:

Date:

Scale:

Prepared by:

Inventory of tanks and stores

If you already have such an inventory or can use your buildings inventory, then this may be supplied as an alternative to the example given below, provided it contains a similar level of detail. Include details for stores containing 'wastes'.

Building/facility	Number of tanks or stores	Size of tanks (m) <i>(Effective depth is stated, excluding freeboard)</i>	Total storage capacity <i>(Excluding freeboard volume)</i>
Farrowing house 1	4	33.75 x 0.9 x 0.55	67m ³
1st stage weaner	8	5.6 x 2.05 x 0.65	60m ³
2nd stage weaner	8	6.5 x 3 x 0.6	93m ³
Finishing house	2	61 x 1.2 x 0.75	110m ³
Dirty water tank	1		22m ³
Slurry store	1	22.9 diameter x 4.8	1852m ³
Dry sow house feed store	1		14T
Farrowing house feed store	1		14T
1st stage weaner feed store	1		8T
Feed mill			
Bin A, B, C	3		12T
Bin D	1		5T
Co-product 1, 2	2		25m ³
Co-product 3 (whey tank)	1		18m ³
Co-product 4	1		1m ³
Milled bin 1, 2	2		3T
Wet feed tank 1, 2	2		5T
Empty bag and container store	1	3 x 3	unknown
Red diesel fuel tank	1		2,700 litres
Paraffin tank (incinerator)	1		1,400 litres
Store room	1		
Bunded chemical store			
Biocides		5 and 25 litre or 1kg packs	100 litres (max) 5kg (max)
Pesticides		1 and 5 litre or 1kg packs	25 litres (max) 5kg (max)
Rodenticides		2.5 kg packs	10 kg (max)
Sharps box	1		
Empty container bins	4	0.9 x 0.9 x 1.2	1.0m ³

Inventory of raw materials

A copy of the Table of Raw Materials, question B3.5 8d is appended, attach copy and update as appropriate.

Recording incidents

All incidents that have caused or could result in environmental pollution are recorded immediately following the event on the Site Closure Plan.

Emergency procedures

If you already have a document with emergency procedures listed, then this may be supplied as an alternative to the examples in the following tables provided, a similar level of detail is required.

Important: Livestock welfare and prevention of environmental pollution must be given priority during any emergency event but with full regard to the health and safety of all persons.

Immediate actions

- Raise the alarm where human safety is at risk
- If necessary contact emergency services
- Extinguish all naked flames
- Obtain help from other members of staff nearby
- In all cases wear and use appropriate Personal Protective Equipment (PPE)
- Do not enter tanks or confined spaces unless trained in the correct procedures and not before all procedures have been satisfied.

Secondary actions

Follow appropriate procedures for type of accident as described in the following tables.

Training

A plan is of no use unless everyone on the site who is responsible for tasks that could result in an incident have been made fully aware of the plan and trained in carrying it out. You must record details of this training as evidence that it has taken place.

Accident type	Anticipated consequences	Action to be taken (listed in order of priority)
2. Power outage <ul style="list-style-type: none"> • Failure of slurry pumping systems resulting in tank overflow • Failure of automatic liquid level control sensors and devices 	Overflow of storage facilities	<ul style="list-style-type: none"> • As above – see (1) • Start emergency generator/obtain and have qualified electrician install generator
3. Fire <ul style="list-style-type: none"> • Livestock • Fuels and oils • Chemicals • Bedding • Feed • Buildings – those with a large timber component at highest risk 	<ul style="list-style-type: none"> • Spreading between buildings and stores • Toxic and polluting smoke, wind dispersion of pollutants, surface runoff from firefighting water • Surface runoff from failed tanks, stores or pipework • Exploding gas and fuel canisters/containers Increased number of dead animals for disposal • Dust and fibres from sheet building materials (may contain asbestos) 	<ul style="list-style-type: none"> • Raise alarm on site • Ensure all persons are evacuated from danger area • If safe to do so, turn off electricity/fuel supplies • Ensure all staff on farm are alerted • Call fire brigade and other emergency services necessary • Contact office or Duty Manager • If necessary, contact Environment Agency 0800 80 70 60 or on local office number • Post member of staff at the end of the farm road/gate to direct emergency services • Liaise and follow instructions of emergency services, making them aware of risks and hazards, provide a copy of the Accident Management Plan • Consult Product Data Sheets (COSHH) if appropriate • Do not enter or permit others to enter affected area unless it is safe to do so to evacuate persons/livestock • Contact vet if livestock are affected • Evacuate livestock from adjacent buildings and areas, if safe to do so • Ensure firefighting water and other liquids cannot cause pollution – follow steps as outlined above – see (1) • Once under control give priority to remaining livestock • Make temporary repairs, if appropriate • Clean up any materials that may be a hazard to the environment – where materials identified as containing asbestos are present specialist services are to be employed • Dispose of contaminated materials safely • Assess cause and take action to prevent repeat • Record incident, measures taken and to be taken

Accident type	Anticipated consequences	Action to be taken (listed in order of priority)
4. Notifiable or other serious disease outbreak	<ul style="list-style-type: none"> • Increased numbers of dead animals to be disposed of • Additional volumes of biocides stored and in use on farm • Additional volumes of dirty water to be handled and disposed of • Dirty water generated from 'clean' areas • Additional volumes of waste materials and equipment to be disposed of. 	<ul style="list-style-type: none"> • Agree carcass disposal policy with Animal and Plant Health Agency (formerly SVS) and EA • Agree procedures with Animal and Plant Health Agency and EA before commencing cleaning and disinfection procedures. Ensure a brief written note of this agreement is made and signed by the parties involved
5. Severe weather <ul style="list-style-type: none"> • Flooding • Wind damage 	<ul style="list-style-type: none"> • Overflow of storage facilities • Power outage • Fire. 	<ul style="list-style-type: none"> • As above – see (1) • Start emergency generator/obtain and have qualified electrician install generator • As above – see (2) • As above – see (3)

This document has been prepared by the applicant using the AHDB Pork template.

AHDB Pork is a part of the Agriculture and Horticulture Development Board (AHDB).

While the Agriculture and Horticulture Development Board seeks to ensure that the information contained within this document is accurate at the time of printing, no warranty is given in respect thereof and, to the maximum extent permitted by law, the Agriculture and Horticulture Development Board accepts no liability for loss, damage or injury howsoever caused (including that caused by negligence) or suffered directly or indirectly in relation to information and opinions contained in or omitted from this document.