

Stockman's Eye

Portable
Weight
Estimation



OSBORNE
(EUROPE) LTD.

Stockman's Eye – a portable device for estimating pig weights

Stockman's Eye is a dual purpose device. When clipped in position above a feeder or drinker and left running it will automatically monitor pig visits and collect pig weights and growth rate information. Alternatively it can be carried by the stockman and used to collect spot weights of individual pigs.

Hardware to suit the environment

A rugged tablet computer with a carry case and harness enables the camera to be held in one hand and the computer operated with the other.



Monitoring weight and growth in a pen

The camera arm can be clipped to a mounting bracket above a feeder or drinker and left running in automatic mode. As pigs visit the feeder / drinker they are measured and the measurement data is recorded and presented in graphical form to show the weight distribution of the pen.

By moving the device from pen to pen on a daily basis a number of pens can be monitored. If it is returned to these pens on a regular basis the growth rate of the pen is determined and can be displayed on a growth chart.

Selecting pigs for market

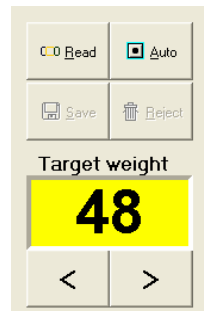
Stockman's Eye is suitable for use with small pens of pigs where the feeding trough is adjacent to the walkway. The operator can use it from the walkway while the pigs are feeding to determine which of the pigs are at the target weight, they can then be marked with a spray can.

The camera is held above the pig to be measured, with the laser spot on the pigs back. When the 'Read' button is pressed it grabs and processes an image to obtain measurements of the pig from which the weight is estimated and displayed. The laser system automatically compensates for the camera height above the pig.

Easy to use software

On start up the computer shows an image display area plus a row of tool buttons at the top and user controls in a panel on the right hand side.

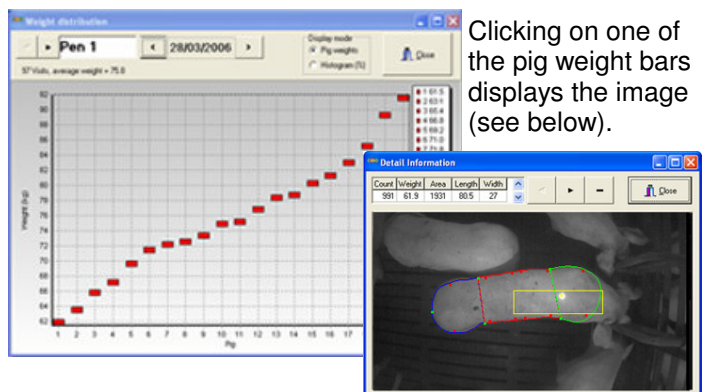
The primary control is the 'Read' button. When pressed the image is grabbed, processed and the resultant weight displayed. The weight display has a green background if the laser spot has been found and a red background if not. An audible beep confirms the weight is above a pre-defined target weight and a different beep signifies it is below it.



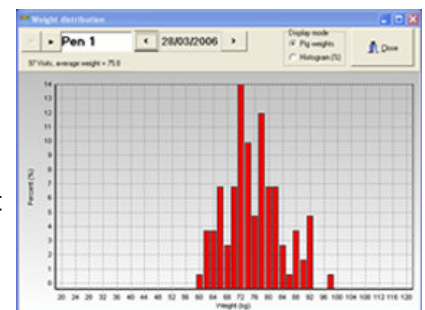
Easy to understand reports

The Weight distribution report shows the readings graphically and it is possible to see how the weight is distributed for the selected location on the selected day. There are 2 display modes as follows:

Pig weights : shows each recorded weight individually



Histogram : this mode displays a bar chart with the percentage of the total weights that are in each 2 Kg. step and so presents a snapshot of the weight distribution.



Osborne (Europe) Ltd., Unit C2, Bergen Close, Tyne Tunnel Trading Estate, North Shields, Tyne & Wear, NE29 7TA, UK
(T) +44 (0) 191 2596222. (F) +44 (0) 191 2592900. e-mail: sales@osborne-europe.co.uk Web: www.osborne-europe.co.uk

Call +44 (0) 191 2596222 for further information